
A Skull-Stripping Filter for ITK

Release 1.0

Stefan Bauer¹, Thomas Fejes^{1,2} and Mauricio Reyes¹

January 14, 2013

¹Institute for Surgical Technology and Biomechanics, University of Bern, Switzerland

²Department of Neuroradiology, Inselspital, Bern University Hospital, Switzerland

stefan.bauer@istb.unibe.ch

Abstract

Skull-stripping (or brain extraction) is an important pre-processing step in neuroimage analysis. This document describes a skull-stripping filter implemented using the Insight Toolkit ITK, which we named `itk::StripTsImageFilter`. It is a composite filter based on existing ITK classes. The filter has been implemented with usability, robustness, speed and versatility in mind, rather than accuracy. This makes it useful for many pre-processing tasks in neuroimage analysis.

This paper is accompanied by the source code, input data and a testing environment.

Latest version available at the [Insight Journal](http://hdl.handle.net/10380/3353) [<http://hdl.handle.net/10380/3353>]
Distributed under [Creative Commons Attribution License](http://creativecommons.org/licenses/by/4.0/)

Contents

1	Introduction	2
2	Methods	2
3	Implementation	3
4	Evaluation	3
5	Conclusion	4
6	User Guide	4
7	Acknowledgements	5

1 Introduction

Skull-stripping is an important pre-processing step for analyzing medical images of the head region. Skull-stripping separates the brain from the skull and other surrounding structures. This is required by many algorithms for automatic segmentation or registration of brain images, as well as for visualization of the results.

In the last years, many different approaches have been proposed to solve this problem. They range from simple morphological operations to advanced model-based methods or sophisticated classification-based approaches [2, 4, 6, 9, 13, 11, 12, 15, 16, 19]. Arguably the most-used tool is the brain extraction tool (BET) developed by Smith et al. [16]. Although there have been a number of comparison papers [5, 7, 10] and even one online resource for directly comparing different algorithms [14], the results are inconclusive. Recently, there have also been methods proposed, which are targeted at specific applications, as an example skull-stripping for tumor-bearing brain images [17, 1].

In general, the majority of the current methods are tuned to work on T_1 -weighted magnetic resonance images (MRI). The problem with some of the most accurate methods is, that they require a significant amount of computation time, which makes them not very useful for preprocessing purposes. Additionally, most implementations are not publicly available and to the best of our knowledge, there is no filter with publicly available source code for the Insight Toolkit (ITK) [8] www.itk.org. An ITK filter, which is easy to use, versatile, robust and has a fast run-time, would be important for being able to directly integrate this preprocessing step into individual applications. We want to address this need by contributing an ITK class for skull-stripping of medical images.

2 Methods

We implemented a method previously described in [1]. It is based on a two step procedure. Initially, an atlas image is registered to the patient image using an affine transformation model and the brain mask of the atlas is propagated to the patient image with the calculated transformation matrix [20]. This brain mask is eroded and then serves as initialization for a refined brain extraction based on level-sets. The level-set is evolved towards the edge of the brain-skull border with dedicated expansion, curvature and advection terms [18].

As an atlas, we use a customized isotropic T_1 -weighted MR image from the IXI dataset ¹ with a manually generated brain mask.

¹<http://www.brain-development.org/>

3 Implementation

The method has been implemented as an ITK filter, named

`itk::StripTsImageFilter`

which can be used within a standard ITK pipeline. It is designed as a composite filter, making use of standard ITK classes, namely the registration framework and the level-set framework. It is derived from the `itk::ImageToImageFilter` class and thus implements the standard functions. The filter requires 3 inputs:

```
SetInput ()
SetAtlasImage ()
SetAtlasMask ()
```

and outputs a binary brain mask image, which can be used to extract the brain from the patient image.

In order to make the method more robust, after geometrical initialization with the `itk::CenteredTransformInitializer`, we first perform a multi-resolution `itk::VersorRigid3DTransform`, followed by an `itk::AffineTransform` using the `itk::MattesMutualInformationImageToImageMetric`. This allows us to handle cases, where the atlas has a different modality than the patient image. For speed reasons, the initial registration is performed on a subsampled version of the patient image. The final refinement of the brain-skull border is carried out by the `itk::GeodesicActiveContourLevelSetImageFilter` in two resolution levels in order to increase robustness and speed. Additionally, in order to be able to handle various input image resolutions easily, all computations are performed in a standard space of 1mm isotropic resolution.

The current implementation assumes that the images are 3-dimensional. It can be applied to a wide range of different image modalities and does not require any specific parameter settings, but when necessary, the user can fine-tune the parameters of the registration or level-set segmentation according to his requirements.

4 Evaluation

We applied the proposed method to a T_1 -weighted MR image from the synthetic Brainweb database [3] and show the result on one axial slice in figure 1.

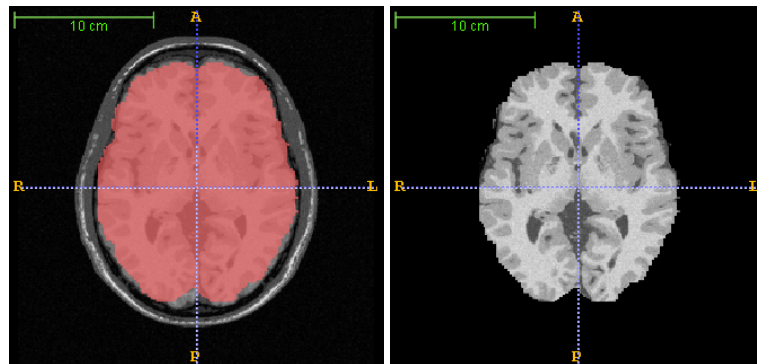


Figure 1: Skull-stripping result shown on an axial slice of one T_1 -weighted Brainweb image. Left: original image with mask overlay. Right: Brain tissues after applying the skull-stripping mask.

In order to demonstrate the versatility of the method, we also applied it to different medical image modalities using the same atlas and parameters settings. Figure 2 illustrates the results on T_1 , $T_{1\text{contrast}}$, T_2 and $T_{2\text{flair}}$ MR images of varying resolutions, as well as one CT image. We also applied the method to a database of around 50 tumor-bearing brain MR images with visually convincing results. Only on fMRI data the results were not satisfactory.

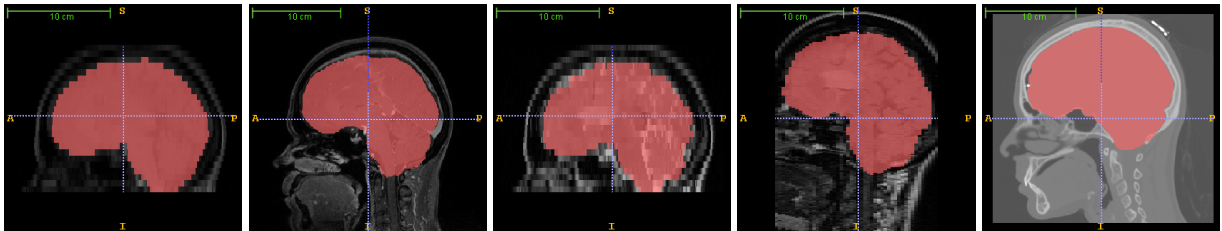


Figure 2: Skull-stripping results shown on a sagittal slice of different patient images. From left to right: Anisotropic T_1 MRI (axial acquisition), isotropic $T_{1\text{contrast}}$ MRI (sagittal acquisition), anisotropic T_2 MRI (axial acquisition), anisotropic $T_{2\text{flair}}$ MRI (coronal acquisition), isotropic CT.

In order to provide quantitative evaluation, we applied the filter to a database of 40 healthy T_1 -weighted MR images from the segmentation validation engine [14]. With standard settings, we achieve an average Dice coefficient of 0.91 with a standard deviation of ± 0.02 on these images.

Computation time is between 1 and 4 minutes on a standard PC.

5 Conclusion

We implemented a method for automatic skull-stripping of volumetric medical images as an ITK filter and provide the source code along with this article. The method is based on initial atlas registration with subsequent level-set refinement of the brain mask. The advantages of this filter include its ease-of-use, the robustness also in case of lesions, a reasonable computation time and the ability to be used on a number of different image modalities. The accuracy is sufficient for many tasks in neuroimage analysis.

6 User Guide

We provide a short C++ program `skullStripping.cxx` demonstrating the use of the filter. It works on 3D medical images and can also serve as an example how to use the `itk::StripTsImageFilter` in an individual project.

For the command line program, the user has to provide the patient image filename, the atlas image filename and the atlas mask filename as a command line argument. If the program is called without any arguments, a brief help is displayed.

For example in a Windows environment, you would use:

```
skullStripping.exe patientImageFilename atlasImageFilename atlasMaskFilename
```

The following excerpt from the `skullStripping.cxx` main file shows how to use the `itk::StripTsImageFilter` in an individual project and how to use the output for masking the patient image.

```
// set up skull-stripping filter
typedef itk::StripTsImageFilter<ImageType, AtlasImageType, AtlasLabelType> StripTsFilterType;
StripTsFilterType::Pointer stripTsFilter = StripTsFilterType::New();

// set the required inputs for the stripTsImageFilter
stripTsFilter->SetInput( reader->GetOutput() );
stripTsFilter->SetAtlasImage( atlasReader->GetOutput() );
stripTsFilter->SetAtlasBrainMask( labelReader->GetOutput() );

try
{
    stripTsFilter->Update();
}
catch ( itk::ExceptionObject &exception )
{
    std::cerr << "Exception caught ! " << std::endl;
    std::cerr << &exception << std::endl;
}

// mask the patient image using the output generated from the stripTsImageFilter as mask
typedef itk::MaskImageFilter<ImageType, AtlasLabelType, ImageType> MaskFilterType;
MaskFilterType::Pointer maskFilter = MaskFilterType::New();

maskFilter->SetInput1( reader->GetOutput() );
maskFilter->SetInput2( stripTsFilter->GetOutput() );

try
{
    maskFilter->Update();
}
catch ( itk::ExceptionObject &exception )
{
    std::cerr << "Exception caught ! " << std::endl;
    std::cerr << &exception << std::endl;
}
```

7 Acknowledgements

We would like to thank Arnaud Gelas and Bill Lorensen for their help with setting up and improving the module.

References

- [1] Stefan Bauer, Lutz-Peter Nolte, and Mauricio Reyes. Skull-stripping for Tumor-bearing Brain Images. In Philippe Büchler and Stephen Ferguson, editors, *Annual Meeting of the Swiss Society for Biomedical Engineering*, page 2, Bern, April 2011. SSBE. arXiv:1204.0357. 1, 2
- [2] Aaron Carass, Jennifer Cuzzocreo, M Bryan Wheeler, Pierre-Louis Bazin, Susan M Resnick, and Jerry L Prince. Simple paradigm for extra-cerebral tissue removal: Algorithm and analysis. *NeuroImage*, 56(4):1982–1992, March 2011. 1
- [3] C.A. Cocosco, V. Kollokian, R.S. Kwan, and A.C. Evans. BrainWeb: Online interface to a 3D MRI simulated brain database. *Neuroimage*, 5(4), 1997. 4
- [4] Simon F Eskildsen, Pierrick Coupé, Vladimir Fonov, José V Manjón, Kelvin K Leung, Nicolas Guizard, Shafik N Wassef, Lasse Riis Ostergaard, and D Louis Collins. BEaST: Brain extraction based on nonlocal segmentation technique. *NeuroImage*, 59(3):2362–2373, September 2011. 1
- [5] Christine Fennema-Notestine, I Burak Ozyurt, Camellia P Clark, Shaunna Morris, Amanda Bischoff-Grethe, Mark W Bondi, Terry L Jernigan, Bruce Fischl, Florent Segonne, David W Shattuck, Richard M Leahy, David E Rex, Arthur W Toga, Kelly H Zou, and Gregory G Brown. Quantitative evaluation of automated skull-stripping methods applied to contemporary and legacy images: effects of diagnosis, bias correction, and slice location. *Human brain mapping*, 27(2):99–113, February 2006. 1
- [6] H. Hahn and H.O. Peitgen. The skull stripping problem in MRI solved by a single 3D watershed transform. In *Medical Image Computing and Computer-Assisted Intervention MICCAI 2000*, pages 129–145. Springer, 2000. 1
- [7] SW Hartley, AI Scher, ESC Korf, LR White, and LJ Launer. Analysis and validation of automated skull stripping tools: a validation study based on 296 MR images from the Honolulu Asia aging study. *Neuroimage*, 30(4):1179–1186, 2006. 1
- [8] L. Ibanez, Will Schroeder, L. Ng, J. Cates, and Others. *The ITK software guide*. Citeseer, 2003. 1
- [9] Juan Eugenio Iglesias, Cheng-Yi Liu, Paul M Thompson, and Zhuowen Tu. Robust brain extraction across datasets and comparison with publicly available methods. *IEEE transactions on medical imaging*, 30(9):1617–34, September 2011. 1
- [10] J Lee. Evaluation of automated and semi-automated skull-stripping algorithms using similarity index and segmentation error. *Computers in Biology and Medicine*, 33(6):495–507, November 2003. 1
- [11] S.A. Sadananthan, Weili Zheng, M.W.L. Chee, and Vitali Zagorodnov. Skull stripping using graph cuts. *NeuroImage*, 49(1):225–239, 2010. 1
- [12] S Sandor and R Leahy. Surface-based labeling of cortical anatomy using a deformable atlas. *IEEE transactions on medical imaging*, 16(1):41–54, February 1997. 1
- [13] F. Ségonne, A.M. Dale, E Busa, M Glessner, D Salat, H.K. Hahn, and B Fischl. A hybrid approach to the skull stripping problem in MRI. *Neuroimage*, 22(3):1060–1075, 2004. 1
- [14] David W Shattuck, Gautam Prasad, Mubeena Mirza, Katherine L Narr, and Arthur W Toga. Online resource for validation of brain segmentation methods. *NeuroImage*, 45(2):431–9, April 2009. 1, 4

- [15] Feng Shi, Li Wang, J Gilmore, Weili Lin, and Dinggang Shen. Learning-Based Meta-Algorithm for MRI Brain Extraction. In Gabor Fichtinger, Anne Martel, and Terry Peters, editors, *MICCAI - Medical Image Computing and Computer Assisted Interventions*, pages 313–321, Toronto, 2011. 1
- [16] Stephen M Smith. Fast robust automated brain extraction. *Human brain mapping*, 17(3):143–55, November 2002a. 1
- [17] William Speier, J Iglesias, L El-Kara, Zhuowen Tu, and Corey Arnold. Robust Skull Stripping of Clinical Glioblastoma Multiforme Data. In Gabor Fichtinger, Anne Martel, and Peters, editors, *MICCAI - Medical Image Computing and Computer Assisted Interventions*, pages 659–666, Toronto, 2011. Springer LNCS. 1
- [18] Richard Tsai and Stanley Osher. Level Set Methods and their Applications in Image Science. *Communications in Mathematical Sciences*, 1(4):623–656, 2003. 2
- [19] Yaping Wang, Jingxin Nie, PT Yap, Feng Shi, Lei Guo, and Dinggang Shen. Robust Deformable-Surface-Based Skull-Stripping for Large-Scale Studies. In Gabor Fichtinger, Anne Martel, and Peters, editors, *MICCAI - Medical Image Computing and Computer Assisted Interventions*, pages 635–642, Toronto, 2011. Springer LNCS. 1
- [20] Barbara Zitova and Jan Flusser. Image registration methods: a survey. *Image and Vision Computing*, 21(11):977–1000, October 2003. 2