
Structural MRI Unwarping Using CMTK¹

Release 1.00

Torsten Rohlfing

May 3, 2012

Neuroscience Program, SRI International, Menlo Park, CA

Abstract

This document describes the workflow for unwarping structural MR images, in particular T_1 -weighted SPGR and MP-RAGE scans, using reference scans of the Magphan[®] EMR051 Quantitative Imaging Phantom (a.k.a. ADNI Phantom) and the tools of the Computational Morphometry Toolkit (CMTK).

Contents

1	Introduction	2
2	What You Need and Where You Get It	2
2.1	Structural Imaging Phantom	2
2.2	CMTK	3
3	Step-by-Step	3
3.1	Imaging	3
3.2	DICOM Image Stacking	3
3.3	Phantom Detection	5
3.4	Create Unwarping Transformation	5
3.5	Correction With and Without Unwarping	6
4	Concluding Remarks	7
A	ADNI Phantom Geometry	9

¹This document is licensed under the Creative Commons Attribution License Version 3.0.



Figure 1: The Magphan® EMR051 Quantitative Imaging Phantom, seen from “anterior,” “right,” and “superior” direction (in “patient coordinates,” pictures from left to right).

1 Introduction

Nonlinear distortions and drift of scale calibration can severely confound imaging-based studies, especially when run on multiple scanners or even at multiple imaging sites.

The Magphan® EMR051 Quantitative Imaging Phantom (also known as the “ADNI Phantom” after the Alzheimer’s Disease Neuroimaging Initiative) provides a technical solution for detecting, and ultimately correcting, the effects of nonlinearity as well as drift over time, whether on a single scanner or across devices.

Unfortunately, software tools to make practical use of the phantom are not freely available [1] (see also [3]).

We describe in this article for the first time a workflow implementing the correction of scanner miscalibration and nonlinearities *using only freely available data and software tools*. Example image data is provided with the article. Source code for all software tools is available from <http://nitrc.org/projects/cmtk/>.

2 What You Need and Where You Get It

We will assume you already have an MR scanner. If not, pick up a used one on eBay. Make sure you keep an eye on the shipping charges.

2.1 Structural Imaging Phantom

You will need the “Magphan® EMR051 Quantitative Imaging Phantom” (also known as “The ADNI Phantom” [1]), http://www.phantomlab.com/products/magphan_adni.php. Photos of one such phantom are shown in Fig. 1.

The phantom can be purchased from the manufacturer, The Phantom Laboratory, P.O. Box 511, Salem, NY, 12865-0511 USA. These are expensive – hope you saved some cash when you bought your scanner.

2.2 CMTK

Unlike the previous two items, The Computational Morphometry Toolkit (CMTK) is **free**, and that's as in both free beer and free speech. CMTK is available both in source code, licensed under the GPLv3, and as pre-compiled binary distributions from <http://nitrc.org/projects/cmtk/>. If you are using NeuroDebian, you can also install CMTK directly.

We shall assume that CMTK has been installed such that its tools can be run as

```
cmtk <tool> <arg1> <arg2> ...
```

You will need CMTK release 2.2.0 or later. Earlier versions do not support phantom detection of landmark-based nonlinear deformations.

3 Step-by-Step

3.1 Imaging

The imaging phantom should be placed in the scanner according to manufacturer instructions and T_1 -weighted images should be acquired using the site-preferred imaging sequence (e.g., SPGR or MP-RAGE).

It is important to make sure that the entire phantom is contained within the acquisition field of view. Add slices if necessary.

Example DICOM images of the phantom acquired with “sagittal” slice orientation and full coverage are shown in Fig. 2.

3.2 DICOM Image Stacking

Assume that the DICOM files containing the phantom images are stored in the “dicom/ ” directory. These are stacked into a 3D image in NIFTI-format using the following CMTK command:

```
cmtk dcm2image -O phantom.nii dicom/
```

Make sure only the DICOM files of the actual structural scans are in the “dicom/ ” directory, that is, not additional files such as scout images¹.

While CMTK supports a number of file formats, **only NIFTI or NRRD format should be used for storing the phantom image.** The same is true for any patient images to be unwarped. The reason for this limitation is that, of the supported formats, only NIFTI and NRRD preserve the physical scanner coordinates at which the images were acquired. This information is absolutely necessary to determine the correct spatial relationship between phantom and subject images. Without establishing this relationship, images cannot be unwarped.

¹Otherwise, you can change the output file name to “phantom%n.nii ”, which will result in multiple, numbered output images. You will then need to identify the correct one.

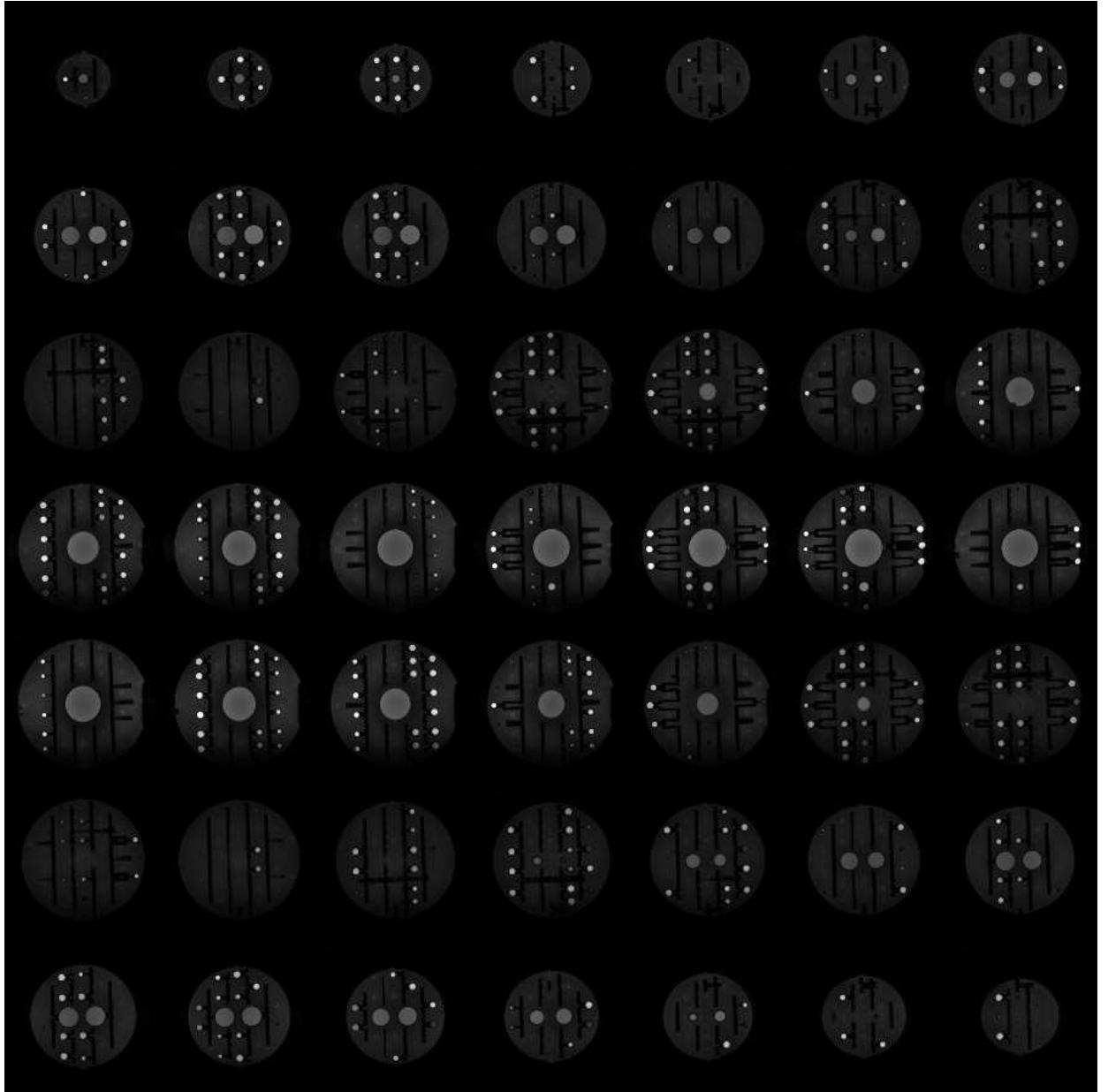


Figure 2: Thumbnails of selected DICOM images acquired using SPGR acquisition on a GE MRI scanner (total number of slices in the acquisition was 176).

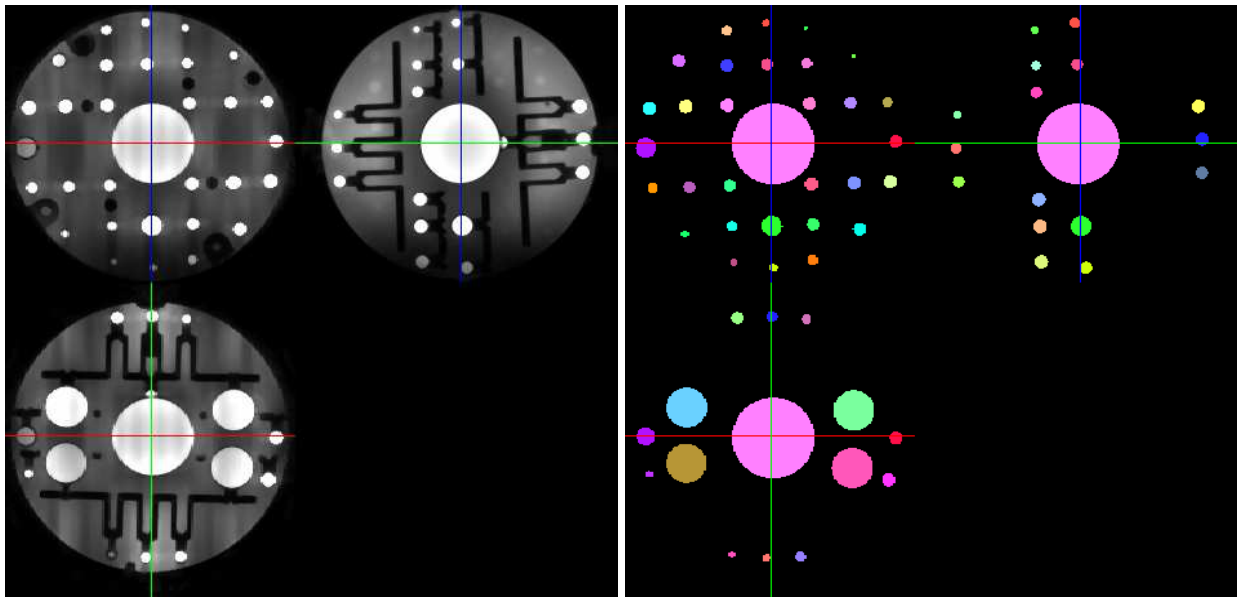


Figure 3: Triplanar view of an SPGR image of the Magphan® EMR051 Quantitative Imaging Phantom (left) and color-coded label map of phantom spheres detected by CMTK’s `detect_adni_phantom` tool.

3.3 Phantom Detection

Next, run the phantom image through the CMTK phantom detection tool. (For hands-on testing, we are providing a NIFTI image of an actual SPGR phantom scan with this article.)

```
cmtk detect_adni_phantom phantom.nii phantom.xml
```

This will produce an XML file, “`phantom.xml`” containing, among other information, the expected as well as detected locations of the centers of all landmark spheres in the phantom. These locations provide the basis for image unwarping.

To verify landmark locations, the phantom detection tool can optionally write a label image matching the input image, in which the volume of each detected phantom sphere is marked with a unique label. To this end, add “`--write-labels labels.nii`” to the above command line to produce the labels file. See Fig. 3 for an example of three orthogonal slices from a phantom image with corresponding labeled spheres.

3.4 Create Unwarping Transformation

From the phantom description file, we can create an unwarping transformation using the following CMTK command (to be entered on a single command line):

```
cmtk unwarph_image --final-cp-spacing 40 --levels 2 phantom.nii \
    phantom.xml unwarph.xform
```

This will generate a nonrigid transformation, “`phantom_unwarph.xform`,” in the space of the image “`phantom.nii`.” If a subject image, “`subject.nii`,” is to be unwrapped, the command should be changed to (again entered on a single command line):

```
cmtk unwarph_image --final-cp-spacing 40 --levels 2 subject.nii \
phantom.xml unwarph.xform
```

Note that a separate transformation must be created for every image to be unwarped, as each image has different physical coordinates.

For now, the only supported representation for the unwarping transformation is a B-spline free-form deformation [4], which requires specification of a final control point spacing (here: 40 mm) and is improved by specifying also a number of multi-resolution levels for the spline fitting process (here: 2 levels) [2]. Future versions of CMTK will implement a thin-plate spline, in which each landmark will be used directly as a control point.

3.5 Correction With and Without Unwarping

Using the deformation field fitted to the phantom landmark locations, the phantom image can be unwarped as follows (entering the command on a single command line):

```
cmtk reformatx --sinc-cosine -o unwarped.nii --floating phantom.nii \
phantom.nii unwarph.xform
```

The phantom image, “phantom.nii ,” is listed twice because it is both the floating (moving) and the reference (fixed) image. Again, if a separate subject image is to be unwarped, the command changes to

```
cmtk reformatx --sinc-cosine -o unwarped.nii --floating subject.nii \
subject.nii unwarph.xform
```

But do you really want to unwarph the image in the first place?

Here’s something to consider — unwarping the image, phantom or subject, requires interpolation and thus introduces smoothing, even though we are using a sinc-kernel above. That’s fine if you really need to know what anatomy is exactly where, say to use the unwarped image for guiding implantation of a deep-brain stimulator. **(Except, it is not fine, because CMTK is not FDA approved, so don’t do it!)**

But what if you only want to unwarph the image to get the correct tissue or region volumes somewhere down your processing pipeline? Then you might actually be making things worse, for example for tissue segmentation, by blurring the image ever so slightly.

Instead, what you really want to know is how the volume of each pixel changes due to distortion so you can compute correct region and tissue volumes. Well, we can do that without interpolation.

What we need for this correct is a map that tells us, for each pixel, how much larger (or smaller) its volume really is, relative to the ideal volume as prescribed in the imaging protocol. Mathematically speaking, we need the map of Jacobian determinants of the inverse unwarping transformation in the coordinate space of the acquired image.

CMTK can give us this exact type of map using the following command (here, for a subject image, but analogous for the phantom image itself if you care):

```
cmtk reformatx -o pxvolume.nii subject.nii unwarph.xform --jacobian \
--inverse unwarph.xform
```

Equivalently, we can use the following two commands to avoid numerical inversion of the nonrigid transformation:

```
cmtk reformatx -o temporary.nii subject.nii --jacobian unwarp.xform
cmtk imagemath --in temporary.nii --one-over --out pxvolume.nii
```

This makes use of the fact that the Jacobian determinant of forward and inverse transformations are related by

$$J_{T^{-1}}(T(\vec{x})) = 1/J_T(\vec{x})$$

for a transformation T and any location \vec{x} . The former command above computes the left-hand side of this equation, whereas the latter two-command sequence computes its right-hand side.

Either way, the resulting image, “pxvolume.nii”, contains at each pixel the true volume of that pixel. By multiplying these values with tissue volumes resulting from segmentation of the original image, we can obtain distortion-corrected volumes *without actually unwarping and thus blurring the original image*.

4 Concluding Remarks

At the time of writing, several of the software tools described herein (CMTK’s “detect _adni _phantom ” and “unwarp _phantom _image ” tools) are still considered work-in-progress. We are making these tools and this article available to provide the community with an opportunity to evaluate our software in a timely fashion. Production use, however, is not recommended at this time.

Acknowledgments

Despite the name “ADNI Phantom” none of the materials used in this article and none of the phantom-related code in CMTK make use of any ADNI data or documentation, other than a cursory inspection of Ref. [1]. In particular, the geometric specifications of the phantom itself were derived from the phantom manual, available from http://www.phantomlab.com/library/pdf/magphan_adni_manual.pdf. The table representing the geometry in CMTK’s source code is included in the Appendix and can be re-used under the terms of the CC-BY-3.0 license.

Use of the materials and software tools described in this article does not establish a requirement to acknowledge ADNI on the author list of subsequent publications [3].

References

- [1] J. L. Gunter, M. A. Bernstein, B. J. Borowski, C. P. Ward, P. J. Britson, J. P. Felmlee, N. Schuff, M. Weiner, and C. R. Jack. “Measurement of MRI scanner performance with the ADNI phantom.” *Medical Physics*, **36**(6):2193–2205, 2009. <http://dx.doi.org/10.1118/1.3116776> . 1, 2.1, 4
- [2] S. Lee, G. Wolberg, and S. Y. Shin. “Scattered data interpolation with multilevel B-splines.” *IEEE Transactions on Visualization and Computer Graphics*, **3**(3):228–244, 1997. <http://dx.doi.org/10.1109/2945.620490> . 3.4

-
- [3] T. Rohlfing and J.-B. Poline. “Why shared data should not be acknowledged on the author byline.” *NeuroImage*, **59**(4):4189–4195, 2012. <http://dx.doi.org/10.1016/j.neuroimage.2011.09.080>. PMID 22008368. 1, 4
- [4] D. Rueckert, L. I. Sonoda, C. Hayes, D. L. G. Hill, M. O. Leach, and D. J. Hawkes. “Nonrigid registration using free-form deformations: Application to breast MR images.” *IEEE Transactions on Medical Imaging*, **18**(8):712–721, 1999. <http://dx.doi.org/10.1109/42.796284>. 3.4

A ADNI Phantom Geometry

```

/*
 * Measurements were derived manually from the following document:
 * http://www.phantomlab.com/library/pdf/magphan\_adni\_manual.pdf
 * They can, therefore, be used without reference to ADNI publications.
 */
const cmtk::MagphanEMR051::SphereEntryType
cmtk::MagphanEMR051::SphereTable[cmtk::MagphanEMR051::NumberOfSpheres] =
{
    //
    // LICENSING EXCEPTION
    // Unlike the remainder of this file, the table of phantom sphere coordinates
    // is licensed under the CC BY 3.0 license
    // (https://creativecommons.org/licenses/by/3.0/us/)
    //
    // 1x 6.0cm SNR sphere
    { "SNR", 60, { 0.0, 0.0, 0.0 }, 0.820, 282, Self::SPHERE_COLOR_NONE },
    // 2x 1.5cm spheres
    { "15mm@90mm", 15, { 89.0, -2.9, 0.0 }, 0.820, 282, Self::SPHERE_COLOR_NONE },
    { "15mm@60mm", 15, { 0.0, -2.9, -60.0 }, 0.820, 282, Self::SPHERE_COLOR_NONE },
    // 4x 3.0cm spheres -- estimated y coord's -- these are not marked in construction drawing
    { "CNR-Orange", 30, { 60.0, 15.0, 0 }, 0.590, 450, Self::SPHERE_COLOR_ORANGE },
    { "CNR-Red", 30, { -60.0, 15.0, 0 }, 0.430, 600, Self::SPHERE_COLOR_RED },
    { "CNR-Yellow", 30, { -60.0, -15.0, 0 }, 0.295, 750, Self::SPHERE_COLOR_YELLOW },
    { "CNR-Green", 30, { 60.0, -15.0, 0 }, 0.220, 900, Self::SPHERE_COLOR_GREEN },
    // 158x 1.0cm spheres
    // Plane 0
    // outer ring
    { "10mm_0_01", 10, { -86.4, 0.0, -30.0 }, 0.820, 282, Self::SPHERE_COLOR_NONE },
    { "10mm_0_02", 10, { -86.4, 0.0, 30.0 }, 0.820, 282, Self::SPHERE_COLOR_NONE },
    { "10mm_0_03", 10, { 86.4, 0.0, -30.0 }, 0.820, 282, Self::SPHERE_COLOR_NONE },
    { "10mm_0_04", 10, { 86.4, 0.0, 30.0 }, 0.820, 282, Self::SPHERE_COLOR_NONE },
    { "10mm_0_05", 10, { -64.7, 0.0, 64.7 }, 0.820, 282, Self::SPHERE_COLOR_NONE },
    { "10mm_0_06", 10, { -64.7, 0.0, -64.7 }, 0.820, 282, Self::SPHERE_COLOR_NONE },
    { "10mm_0_07", 10, { 64.7, 0.0, 64.7 }, 0.820, 282, Self::SPHERE_COLOR_NONE },
    { "10mm_0_08", 10, { 64.7, 0.0, -64.7 }, 0.820, 282, Self::SPHERE_COLOR_NONE },
    { "10mm_0_09", 10, { -30.0, 0.0, 86.4 }, 0.820, 282, Self::SPHERE_COLOR_NONE },
    { "10mm_0_10", 10, { -30.0, 0.0, -86.4 }, 0.820, 282, Self::SPHERE_COLOR_NONE },
    { "10mm_0_11", 10, { 30.0, 0.0, 86.4 }, 0.820, 282, Self::SPHERE_COLOR_NONE },
    { "10mm_0_12", 10, { 30.0, 0.0, -86.4 }, 0.820, 282, Self::SPHERE_COLOR_NONE },
    { "10mm_0_13", 10, { 0.0, 0.0, 91.5 }, 0.820, 282, Self::SPHERE_COLOR_NONE },
    { "10mm_0_14", 10, { 0.0, 0.0, -91.5 }, 0.820, 282, Self::SPHERE_COLOR_NONE },
    // middle ring
    { "10mm_0_15", 10, { -30.0, 0.0, 60.0 }, 0.820, 282, Self::SPHERE_COLOR_NONE },
    { "10mm_0_16", 10, { -30.0, 0.0, -60.0 }, 0.820, 282, Self::SPHERE_COLOR_NONE },
    { "10mm_0_17", 10, { 30.0, 0.0, 60.0 }, 0.820, 282, Self::SPHERE_COLOR_NONE },
    { "10mm_0_18", 10, { 30.0, 0.0, -60.0 }, 0.820, 282, Self::SPHERE_COLOR_NONE },
    { "10mm_0_19", 10, { -60.0, 0.0, 30.0 }, 0.820, 282, Self::SPHERE_COLOR_NONE },
    { "10mm_0_20", 10, { -60.0, 0.0, -30.0 }, 0.820, 282, Self::SPHERE_COLOR_NONE },
    { "10mm_0_21", 10, { 60.0, 0.0, 30.0 }, 0.820, 282, Self::SPHERE_COLOR_NONE },
    { "10mm_0_22", 10, { 60.0, 0.0, -30.0 }, 0.820, 282, Self::SPHERE_COLOR_NONE },
    // inner ring

```

```

{ "10mm_0_23", 10, { -30.0, 0.0, 30.0 }, 0.820, 282, Self::SPHERE_COLOR_NONE },
{ "10mm_0_24", 10, { -30.0, 0.0, -30.0 }, 0.820, 282, Self::SPHERE_COLOR_NONE },
{ "10mm_0_25", 10, { 30.0, 0.0, 30.0 }, 0.820, 282, Self::SPHERE_COLOR_NONE },
{ "10mm_0_26", 10, { 30.0, 0.0, -30.0 }, 0.820, 282, Self::SPHERE_COLOR_NONE },
//      single inferior mid-sagittal sphere
{ "10mm_0_27", 10, { 0.0, 0.0, 60.0 }, 0.820, 282, Self::SPHERE_COLOR_NONE },
//      single right sphere
{ "10mm_0_28", 10, { -91.5, 0.0, 0.0 }, 0.820, 282, Self::SPHERE_COLOR_NONE },
//      Plane 1
//      mid-sagittal
{ "10mm_1_01", 10, { 0.0, -30.0, 40.0 }, 0.820, 282, Self::SPHERE_COLOR_NONE },
{ "10mm_1_02", 10, { 0.0, -30.0, -40.0 }, 0.820, 282, Self::SPHERE_COLOR_NONE },
{ "10mm_1_03", 10, { 0.0, -30.0, 86.5 }, 0.820, 282, Self::SPHERE_COLOR_NONE },
{ "10mm_1_04", 10, { 0.0, -30.0, -86.5 }, 0.820, 282, Self::SPHERE_COLOR_NONE },
{ "10mm_1_05", 10, { 0.0, -30.0, 60.0 }, 0.820, 282, Self::SPHERE_COLOR_NONE },
{ "10mm_1_06", 10, { 0.0, -30.0, -60.0 }, 0.820, 282, Self::SPHERE_COLOR_NONE },
//      +- 30mm lateral
{ "10mm_1_07", 10, { 30.0, -30.0, 81.1 }, 0.820, 282, Self::SPHERE_COLOR_NONE },
{ "10mm_1_08", 10, { 30.0, -30.0, -81.1 }, 0.820, 282, Self::SPHERE_COLOR_NONE },
{ "10mm_1_09", 10, { -30.0, -30.0, 81.1 }, 0.820, 282, Self::SPHERE_COLOR_NONE },
{ "10mm_1_10", 10, { -30.0, -30.0, -81.1 }, 0.820, 282, Self::SPHERE_COLOR_NONE },
{ "10mm_1_11", 10, { 30.0, -30.0, 60.0 }, 0.820, 282, Self::SPHERE_COLOR_NONE },
{ "10mm_1_12", 10, { 30.0, -30.0, -60.0 }, 0.820, 282, Self::SPHERE_COLOR_NONE },
{ "10mm_1_13", 10, { -30.0, -30.0, 60.0 }, 0.820, 282, Self::SPHERE_COLOR_NONE },
{ "10mm_1_14", 10, { -30.0, -30.0, -60.0 }, 0.820, 282, Self::SPHERE_COLOR_NONE },
{ "10mm_1_15", 10, { 30.0, -30.0, 30.0 }, 0.820, 282, Self::SPHERE_COLOR_NONE },
{ "10mm_1_16", 10, { 30.0, -30.0, -30.0 }, 0.820, 282, Self::SPHERE_COLOR_NONE },
{ "10mm_1_17", 10, { -30.0, -30.0, 30.0 }, 0.820, 282, Self::SPHERE_COLOR_NONE },
{ "10mm_1_18", 10, { -30.0, -30.0, -30.0 }, 0.820, 282, Self::SPHERE_COLOR_NONE },
//      +- 60mm lateral
{ "10mm_1_19", 10, { 60.0, -30.0, 30.0 }, 0.820, 282, Self::SPHERE_COLOR_NONE },
{ "10mm_1_20", 10, { 60.0, -30.0, -30.0 }, 0.820, 282, Self::SPHERE_COLOR_NONE },
{ "10mm_1_21", 10, { -60.0, -30.0, 30.0 }, 0.820, 282, Self::SPHERE_COLOR_NONE },
{ "10mm_1_22", 10, { -60.0, -30.0, -30.0 }, 0.820, 282, Self::SPHERE_COLOR_NONE },
//      +- 61mm lateral
{ "10mm_1_23", 10, { 61.0, -30.0, 61.0 }, 0.820, 282, Self::SPHERE_COLOR_NONE },
{ "10mm_1_24", 10, { 61.0, -30.0, -61.0 }, 0.820, 282, Self::SPHERE_COLOR_NONE },
{ "10mm_1_25", 10, { -61.0, -30.0, 61.0 }, 0.820, 282, Self::SPHERE_COLOR_NONE },
{ "10mm_1_26", 10, { -61.0, -30.0, -61.0 }, 0.820, 282, Self::SPHERE_COLOR_NONE },
//      +- 81.1mm lateral
{ "10mm_1_27", 10, { 81.1, -30.0, 30.0 }, 0.820, 282, Self::SPHERE_COLOR_NONE },
{ "10mm_1_28", 10, { 81.1, -30.0, -30.0 }, 0.820, 282, Self::SPHERE_COLOR_NONE },
{ "10mm_1_29", 10, { -81.1, -30.0, 30.0 }, 0.820, 282, Self::SPHERE_COLOR_NONE },
{ "10mm_1_30", 10, { -81.1, -30.0, -30.0 }, 0.820, 282, Self::SPHERE_COLOR_NONE },
//      +- 86.5mm lateral
{ "10mm_1_31", 10, { 86.5, -30.0, 0.0 }, 0.820, 282, Self::SPHERE_COLOR_NONE },
{ "10mm_1_32", 10, { -86.5, -30.0, 0.0 }, 0.820, 282, Self::SPHERE_COLOR_NONE },
//      Plane 1b
//      +- 15mm lateral
{ "10mm_1b_01", 10, { 15.0, 29.1, 45.0 }, 0.820, 282, Self::SPHERE_COLOR_NONE },
{ "10mm_1b_02", 10, { 15.0, 29.1, 65.0 }, 0.820, 282, Self::SPHERE_COLOR_NONE },
{ "10mm_1b_03", 10, { 15.0, 29.1, 85.2 }, 0.820, 282, Self::SPHERE_COLOR_NONE },
{ "10mm_1b_04", 10, { 15.0, 29.1, -45.0 }, 0.820, 282, Self::SPHERE_COLOR_NONE },
{ "10mm_1b_05", 10, { 15.0, 29.1, -65.0 }, 0.820, 282, Self::SPHERE_COLOR_NONE },

```

```

{ "10mm_1b_06", 10, { 15.0, 29.1, -85.2 }, 0.820, 282, Self::SPHERE_COLOR_NONE },
{ "10mm_1b_07", 10, { -15.0, 29.1, 45.0 }, 0.820, 282, Self::SPHERE_COLOR_NONE },
{ "10mm_1b_08", 10, { -15.0, 29.1, 65.0 }, 0.820, 282, Self::SPHERE_COLOR_NONE },
{ "10mm_1b_09", 10, { -15.0, 29.1, 85.2 }, 0.820, 282, Self::SPHERE_COLOR_NONE },
{ "10mm_1b_10", 10, { -15.0, 29.1, -45.0 }, 0.820, 282, Self::SPHERE_COLOR_NONE },
{ "10mm_1b_11", 10, { -15.0, 29.1, -65.0 }, 0.820, 282, Self::SPHERE_COLOR_NONE },
{ "10mm_1b_12", 10, { -15.0, 29.1, -85.2 }, 0.820, 282, Self::SPHERE_COLOR_NONE },
// +- 40mm lateral
{ "10mm_1b_13", 10, { 40.0, 29.1, 15.0 }, 0.820, 282, Self::SPHERE_COLOR_NONE },
{ "10mm_1b_14", 10, { 40.0, 29.1, -15.0 }, 0.820, 282, Self::SPHERE_COLOR_NONE },
{ "10mm_1b_15", 10, { -40.0, 29.1, 15.0 }, 0.820, 282, Self::SPHERE_COLOR_NONE },
{ "10mm_1b_16", 10, { -40.0, 29.1, -15.0 }, 0.820, 282, Self::SPHERE_COLOR_NONE },
// +- 45mm lateral
{ "10mm_1b_17", 10, { 45.0, 29.1, 45.0 }, 0.820, 282, Self::SPHERE_COLOR_NONE },
{ "10mm_1b_18", 10, { 45.0, 29.1, -45.0 }, 0.820, 282, Self::SPHERE_COLOR_NONE },
{ "10mm_1b_19", 10, { -45.0, 29.1, 45.0 }, 0.820, 282, Self::SPHERE_COLOR_NONE },
{ "10mm_1b_20", 10, { -45.0, 29.1, -45.0 }, 0.820, 282, Self::SPHERE_COLOR_NONE },
{ "10mm_1b_21", 10, { 45.0, 29.1, 65.0 }, 0.820, 282, Self::SPHERE_COLOR_NONE },
{ "10mm_1b_22", 10, { -45.0, 29.1, -65.0 }, 0.820, 282, Self::SPHERE_COLOR_NONE },
{ "10mm_1b_23", 10, { 45.0, 29.1, -73.9 }, 0.820, 282, Self::SPHERE_COLOR_NONE },
{ "10mm_1b_24", 10, { -45.0, 29.1, 73.9 }, 0.820, 282, Self::SPHERE_COLOR_NONE },
// +- 64.5mm lateral
{ "10mm_1b_25", 10, { 64.5, 29.1, -45.0 }, 0.820, 282, Self::SPHERE_COLOR_NONE },
{ "10mm_1b_26", 10, { -64.5, 29.1, 45.0 }, 0.820, 282, Self::SPHERE_COLOR_NONE },
// +- 73.9mm lateral
{ "10mm_1b_27", 10, { 73.9, 29.1, 45.0 }, 0.820, 282, Self::SPHERE_COLOR_NONE },
{ "10mm_1b_28", 10, { -73.9, 29.1, -45.0 }, 0.820, 282, Self::SPHERE_COLOR_NONE },
// +- 85.2mm lateral
{ "10mm_1b_29", 10, { 85.2, 29.1, 15.0 }, 0.820, 282, Self::SPHERE_COLOR_NONE },
{ "10mm_1b_30", 10, { 85.2, 29.1, -15.0 }, 0.820, 282, Self::SPHERE_COLOR_NONE },
{ "10mm_1b_31", 10, { -85.2, 29.1, 15.0 }, 0.820, 282, Self::SPHERE_COLOR_NONE },
{ "10mm_1b_32", 10, { -85.2, 29.1, -15.0 }, 0.820, 282, Self::SPHERE_COLOR_NONE },
// Plane 2
// +- 15mm lateral
{ "10mm_2_01", 10, { 15.0, -60.0, 15.0 }, 0.820, 282, Self::SPHERE_COLOR_NONE },
{ "10mm_2_02", 10, { 15.0, -60.0, -15.0 }, 0.820, 282, Self::SPHERE_COLOR_NONE },
{ "10mm_2_03", 10, { -15.0, -60.0, 15.0 }, 0.820, 282, Self::SPHERE_COLOR_NONE },
{ "10mm_2_04", 10, { -15.0, -60.0, -15.0 }, 0.820, 282, Self::SPHERE_COLOR_NONE },
{ "10mm_2_05", 10, { 15.0, -60.0, 45.0 }, 0.820, 282, Self::SPHERE_COLOR_NONE },
{ "10mm_2_06", 10, { 15.0, -60.0, -45.0 }, 0.820, 282, Self::SPHERE_COLOR_NONE },
{ "10mm_2_07", 10, { -15.0, -60.0, 45.0 }, 0.820, 282, Self::SPHERE_COLOR_NONE },
{ "10mm_2_08", 10, { -15.0, -60.0, -45.0 }, 0.820, 282, Self::SPHERE_COLOR_NONE },
{ "10mm_2_09", 10, { 15.0, -60.0, 67.3 }, 0.820, 282, Self::SPHERE_COLOR_NONE },
{ "10mm_2_10", 10, { 15.0, -60.0, -67.3 }, 0.820, 282, Self::SPHERE_COLOR_NONE },
{ "10mm_2_11", 10, { -15.0, -60.0, 67.3 }, 0.820, 282, Self::SPHERE_COLOR_NONE },
{ "10mm_2_12", 10, { -15.0, -60.0, -67.3 }, 0.820, 282, Self::SPHERE_COLOR_NONE },
// +- 45mm lateral
{ "10mm_2_13", 10, { 45.0, -60.0, 15.0 }, 0.820, 282, Self::SPHERE_COLOR_NONE },
{ "10mm_2_14", 10, { 45.0, -60.0, -15.0 }, 0.820, 282, Self::SPHERE_COLOR_NONE },
{ "10mm_2_15", 10, { -45.0, -60.0, 15.0 }, 0.820, 282, Self::SPHERE_COLOR_NONE },
{ "10mm_2_16", 10, { -45.0, -60.0, -15.0 }, 0.820, 282, Self::SPHERE_COLOR_NONE },
// +- 48.7mm lateral
{ "10mm_2_17", 10, { 48.7, -60.0, 48.7 }, 0.820, 282, Self::SPHERE_COLOR_NONE },
{ "10mm_2_18", 10, { 48.7, -60.0, -48.7 }, 0.820, 282, Self::SPHERE_COLOR_NONE },

```

```

{ "10mm_2_19", 10, { -48.7, -60.0, 48.7 }, 0.820, 282, Self::SPHERE_COLOR_NONE },
{ "10mm_2_20", 10, { -48.7, -60.0, -48.7 }, 0.820, 282, Self::SPHERE_COLOR_NONE },
// +- 67.3mm lateral
{ "10mm_2_21", 10, { 67.3, -60.0, 15.0 }, 0.820, 282, Self::SPHERE_COLOR_NONE },
{ "10mm_2_22", 10, { 67.3, -60.0, -15.0 }, 0.820, 282, Self::SPHERE_COLOR_NONE },
{ "10mm_2_23", 10, { -67.3, -60.0, 15.0 }, 0.820, 282, Self::SPHERE_COLOR_NONE },
{ "10mm_2_24", 10, { -67.3, -60.0, -15.0 }, 0.820, 282, Self::SPHERE_COLOR_NONE },
// Plane 2b (same as Plane 2 but at y=+59.1)
// +- 15mm lateral
{ "10mm_2b_01", 10, { 15.0, 59.1, 15.0 }, 0.820, 282, Self::SPHERE_COLOR_NONE },
{ "10mm_2b_02", 10, { 15.0, 59.1, -15.0 }, 0.820, 282, Self::SPHERE_COLOR_NONE },
{ "10mm_2b_03", 10, { -15.0, 59.1, 15.0 }, 0.820, 282, Self::SPHERE_COLOR_NONE },
{ "10mm_2b_04", 10, { -15.0, 59.1, -15.0 }, 0.820, 282, Self::SPHERE_COLOR_NONE },
{ "10mm_2b_05", 10, { 15.0, 59.1, 45.0 }, 0.820, 282, Self::SPHERE_COLOR_NONE },
{ "10mm_2b_06", 10, { 15.0, 59.1, -45.0 }, 0.820, 282, Self::SPHERE_COLOR_NONE },
{ "10mm_2b_07", 10, { -15.0, 59.1, 45.0 }, 0.820, 282, Self::SPHERE_COLOR_NONE },
{ "10mm_2b_08", 10, { -15.0, 59.1, -45.0 }, 0.820, 282, Self::SPHERE_COLOR_NONE },
{ "10mm_2b_09", 10, { 15.0, 59.1, 67.3 }, 0.820, 282, Self::SPHERE_COLOR_NONE },
{ "10mm_2b_10", 10, { 15.0, 59.1, -67.3 }, 0.820, 282, Self::SPHERE_COLOR_NONE },
{ "10mm_2b_11", 10, { -15.0, 59.1, 67.3 }, 0.820, 282, Self::SPHERE_COLOR_NONE },
{ "10mm_2b_12", 10, { -15.0, 59.1, -67.3 }, 0.820, 282, Self::SPHERE_COLOR_NONE },
// +- 45mm lateral
{ "10mm_2b_13", 10, { 45.0, 59.1, 15.0 }, 0.820, 282, Self::SPHERE_COLOR_NONE },
{ "10mm_2b_14", 10, { 45.0, 59.1, -15.0 }, 0.820, 282, Self::SPHERE_COLOR_NONE },
{ "10mm_2b_15", 10, { -45.0, 59.1, 15.0 }, 0.820, 282, Self::SPHERE_COLOR_NONE },
{ "10mm_2b_16", 10, { -45.0, 59.1, -15.0 }, 0.820, 282, Self::SPHERE_COLOR_NONE },
// +- 48.7mm lateral
{ "10mm_2b_17", 10, { 48.7, 59.1, 48.7 }, 0.820, 282, Self::SPHERE_COLOR_NONE },
{ "10mm_2b_18", 10, { 48.7, 59.1, -48.7 }, 0.820, 282, Self::SPHERE_COLOR_NONE },
{ "10mm_2b_19", 10, { -48.7, 59.1, 48.7 }, 0.820, 282, Self::SPHERE_COLOR_NONE },
{ "10mm_2b_20", 10, { -48.7, 59.1, -48.7 }, 0.820, 282, Self::SPHERE_COLOR_NONE },
// +- 67.3mm lateral
{ "10mm_2b_21", 10, { 67.3, 59.1, 15.0 }, 0.820, 282, Self::SPHERE_COLOR_NONE },
{ "10mm_2b_22", 10, { 67.3, 59.1, -15.0 }, 0.820, 282, Self::SPHERE_COLOR_NONE },
{ "10mm_2b_23", 10, { -67.3, 59.1, 15.0 }, 0.820, 282, Self::SPHERE_COLOR_NONE },
{ "10mm_2b_24", 10, { -67.3, 59.1, -15.0 }, 0.820, 282, Self::SPHERE_COLOR_NONE },
// Plane 3
{ "10mm_3_01", 10, { 28.3, -82.2, 28.3 }, 0.820, 282, Self::SPHERE_COLOR_NONE },
{ "10mm_3_02", 10, { 28.3, -82.2, -28.3 }, 0.820, 282, Self::SPHERE_COLOR_NONE },
{ "10mm_3_03", 10, { -28.3, -82.2, 28.3 }, 0.820, 282, Self::SPHERE_COLOR_NONE },
{ "10mm_3_04", 10, { -28.3, -82.2, -28.3 }, 0.820, 282, Self::SPHERE_COLOR_NONE },
{ "10mm_3_05", 10, { 0.0, -88.0, 25.0 }, 0.820, 282, Self::SPHERE_COLOR_NONE },
{ "10mm_3_06", 10, { 0.0, -88.0, -25.0 }, 0.820, 282, Self::SPHERE_COLOR_NONE },
{ "10mm_3_07", 10, { 25.0, -88.0, 0.0 }, 0.820, 282, Self::SPHERE_COLOR_NONE },
{ "10mm_3_08", 10, { -25.0, -88.0, 0.0 }, 0.820, 282, Self::SPHERE_COLOR_NONE },
{ "10mm_3_09", 10, { 0.0, -89.5, 0.0 }, 0.820, 282, Self::SPHERE_COLOR_NONE },
// Plane 3b
{ "10mm_3b_01", 10, { 28.3, 81.4, 28.3 }, 0.820, 282, Self::SPHERE_COLOR_NONE },
{ "10mm_3b_02", 10, { 28.3, 81.4, -28.3 }, 0.820, 282, Self::SPHERE_COLOR_NONE },
{ "10mm_3b_03", 10, { -28.3, 81.4, 28.3 }, 0.820, 282, Self::SPHERE_COLOR_NONE },
{ "10mm_3b_04", 10, { -28.3, 81.4, -28.3 }, 0.820, 282, Self::SPHERE_COLOR_NONE },
{ "10mm_3b_05", 10, { 0.0, 87.2, 25.0 }, 0.820, 282, Self::SPHERE_COLOR_NONE },
{ "10mm_3b_06", 10, { 0.0, 87.2, -25.0 }, 0.820, 282, Self::SPHERE_COLOR_NONE },
{ "10mm_3b_07", 10, { 25.0, 87.2, 0.0 }, 0.820, 282, Self::SPHERE_COLOR_NONE },

```

```
{ "10mm_3b_08", 10, { -25.0, 87.2, 0.0 }, 0.820, 282, Self::SPHERE_COLOR_NONE },
{ "10mm_3b_09", 10, { 0.0, 88.6, 0.0 }, 0.820, 282, Self::SPHERE_COLOR_NONE }
//
// END LICENSING EXCEPTION
//
```